

A hand holding a Fujifilm camera with a lens, set against a background of water and a rocky shore. The text "Traces Of Red" is overlaid on the image.

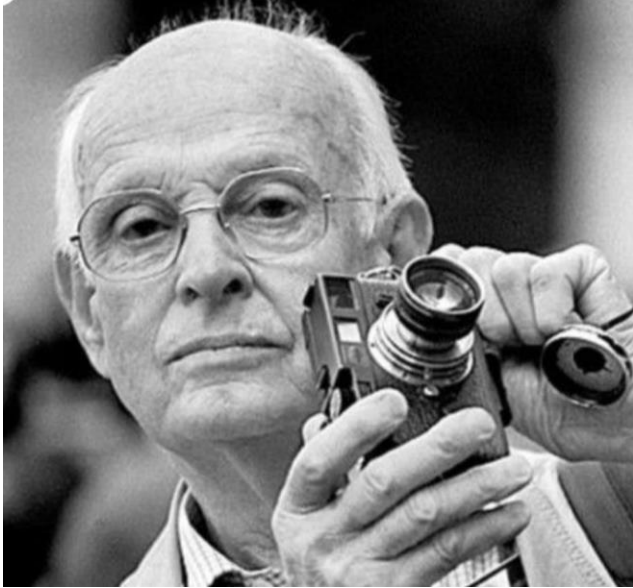
Traces Of Red

Art Major

- Photography/ Photographers
- Water as human source
- Ocean clean-up
- Rhein: Highland vs. Lowland



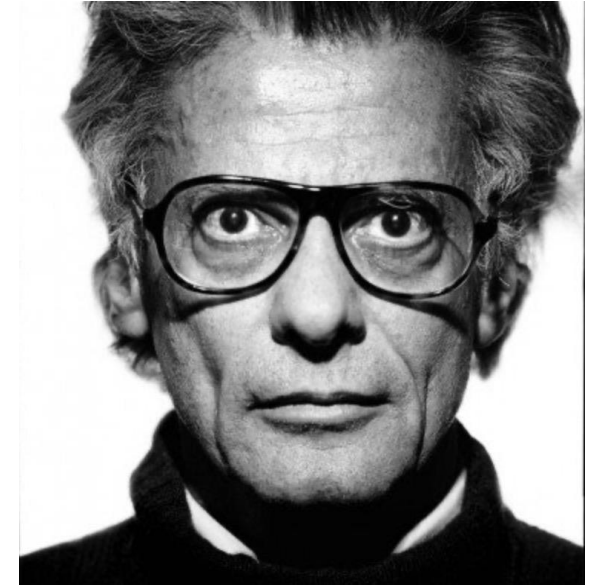
Photographers



Henri Cartier- Bresson



Annie Leibovitz



Richard Avedon

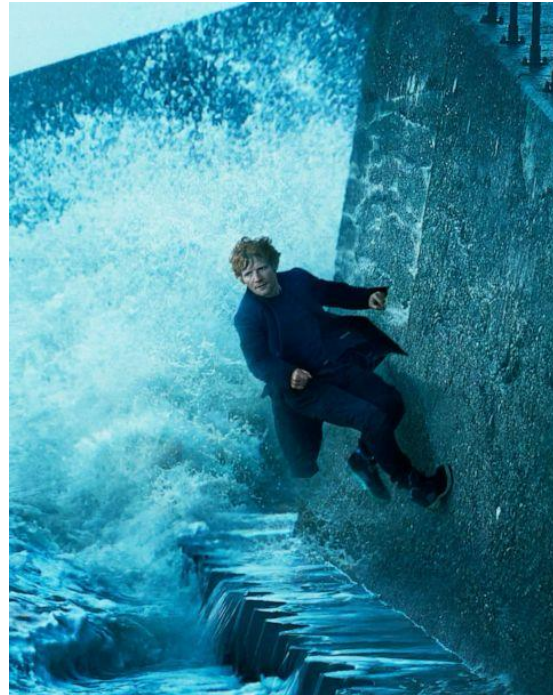
Photographers

Henri Cartier- Bresson



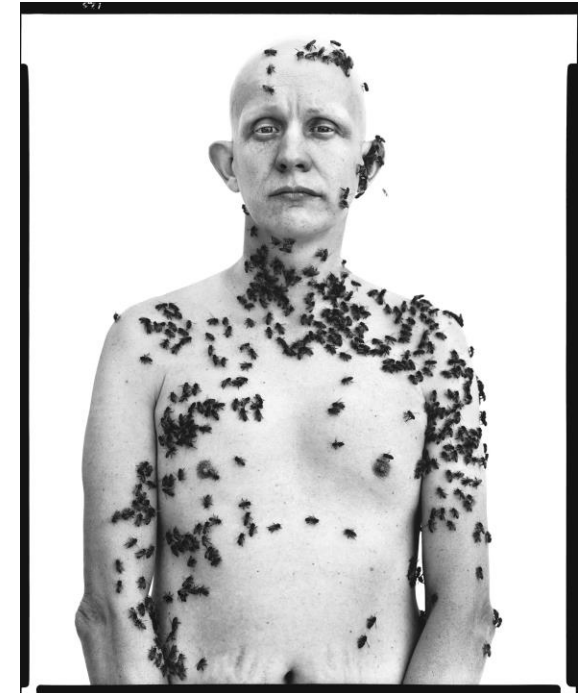
- „The Decisive Moment“

Annie Leibovitz



- Color intensity
- Foto editing
- Foto staging

Richard Avedon



- White background
- black-white contrast



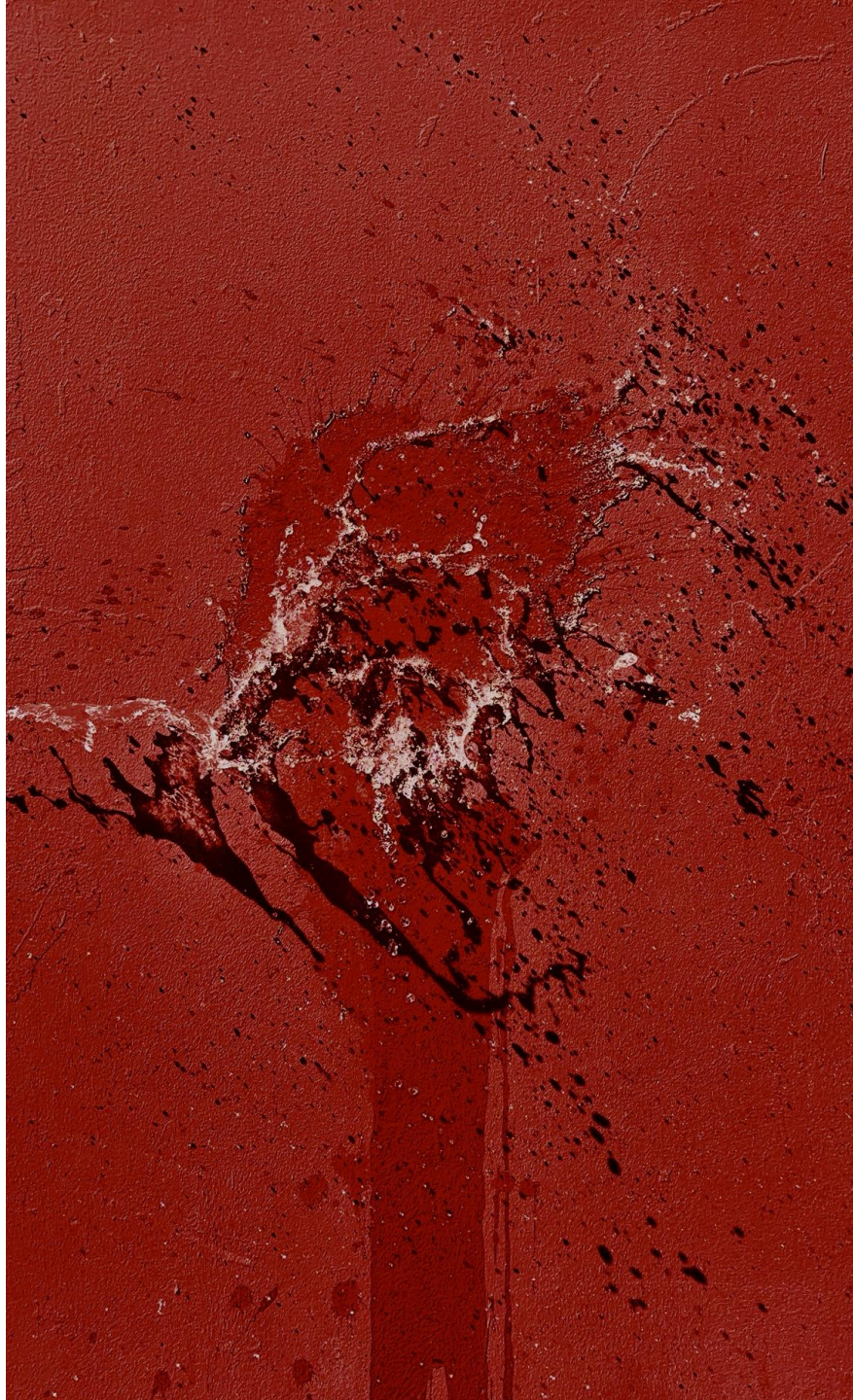
Our Project



Time's **Running** Out,
2026, MAL

Time's **Running** Out

- Water is finite
- Time is running out to avoid irreversible damage and loss
- We have the chance to protect our resources



The **Consequences,**
2026, MAL

The Consequences

- The Consequences of wasting time and water
- Affect everyone
- If time runs out, you can't undo what you did



Betrayal Hurts, 2026, MAL

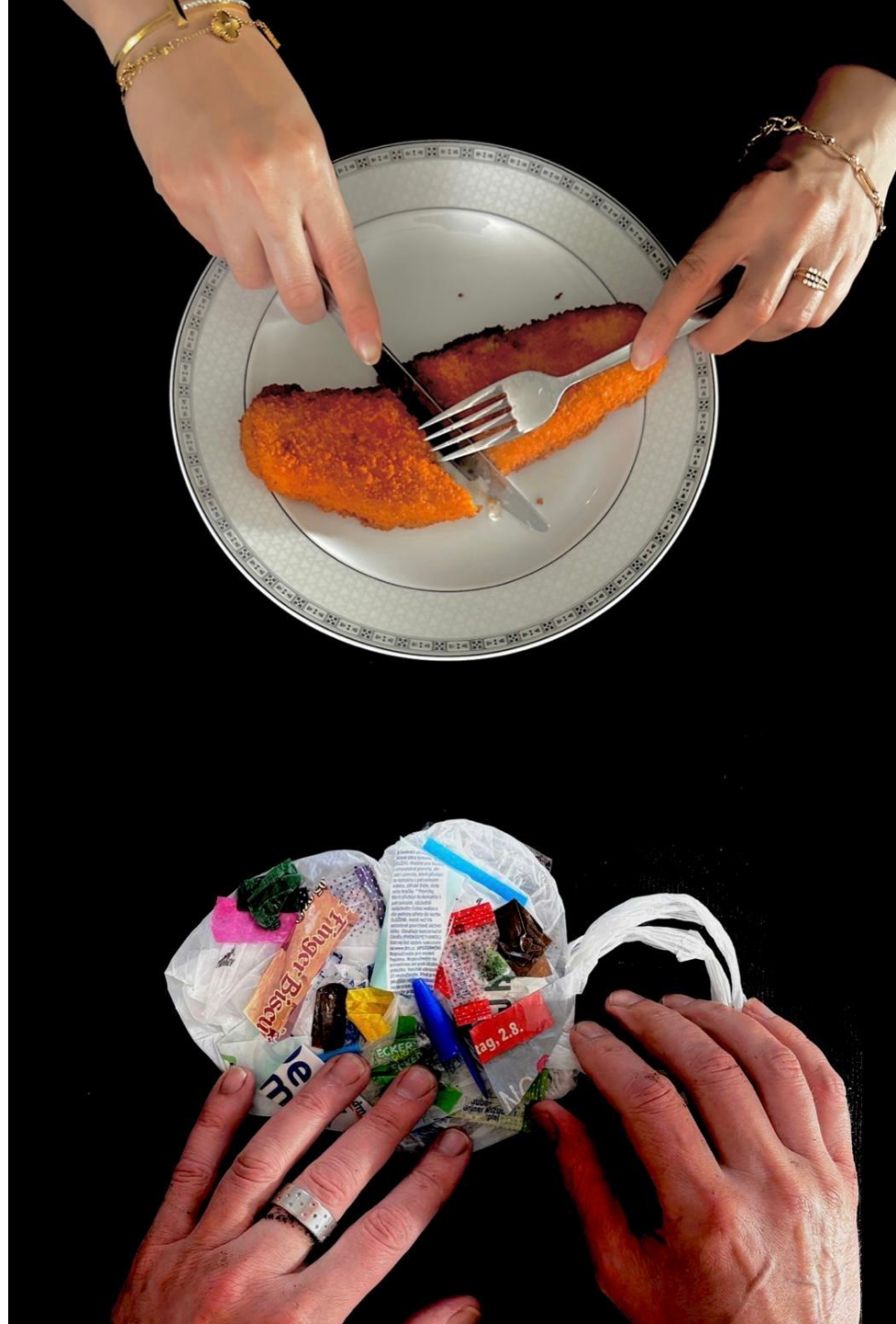
Betrayal Hurts

- If promises aren't kept, good cooperation cannot happen
 - We have to be honest and work together
 - Peace has to be real
- > only through trust and honesty real peace can be achieved

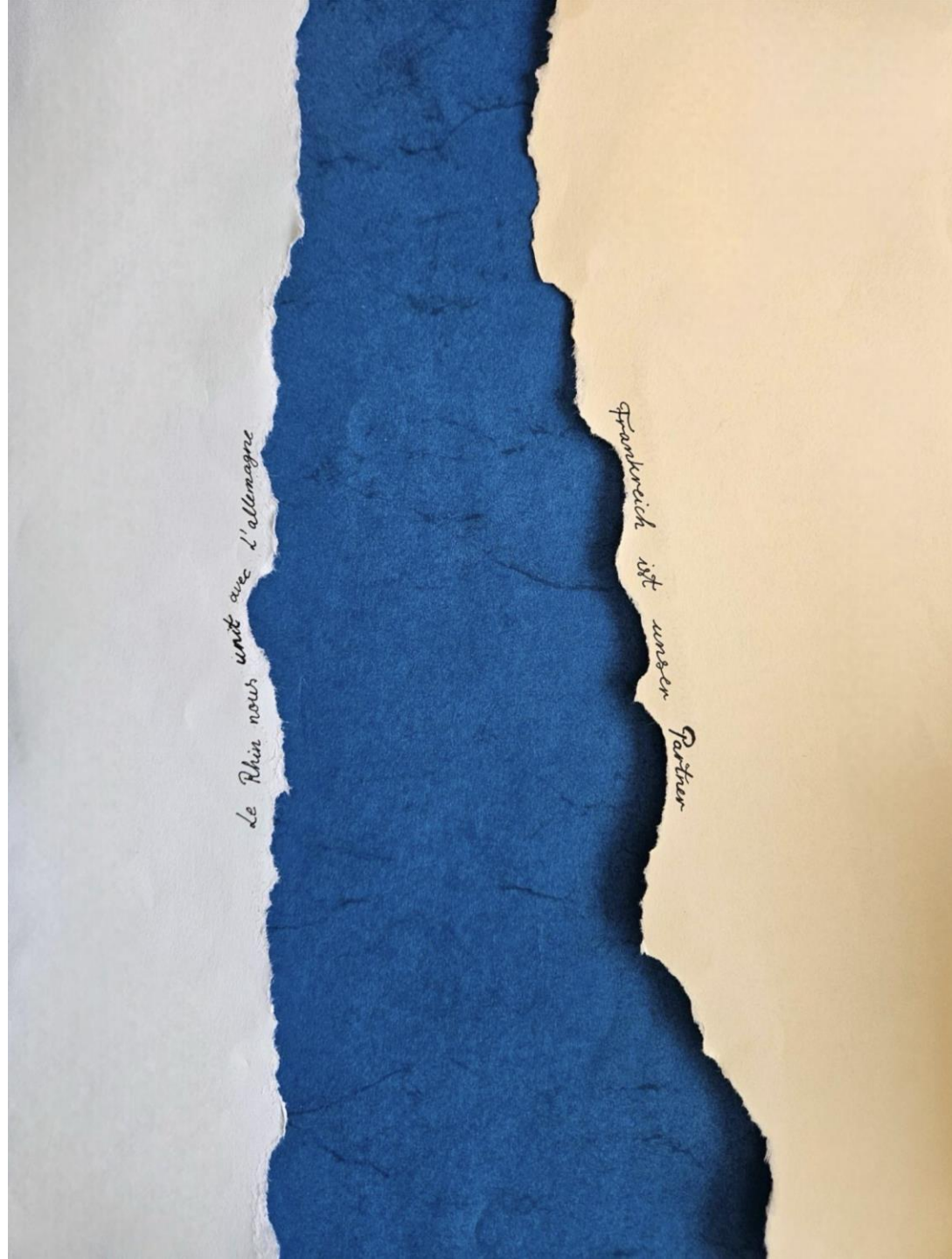
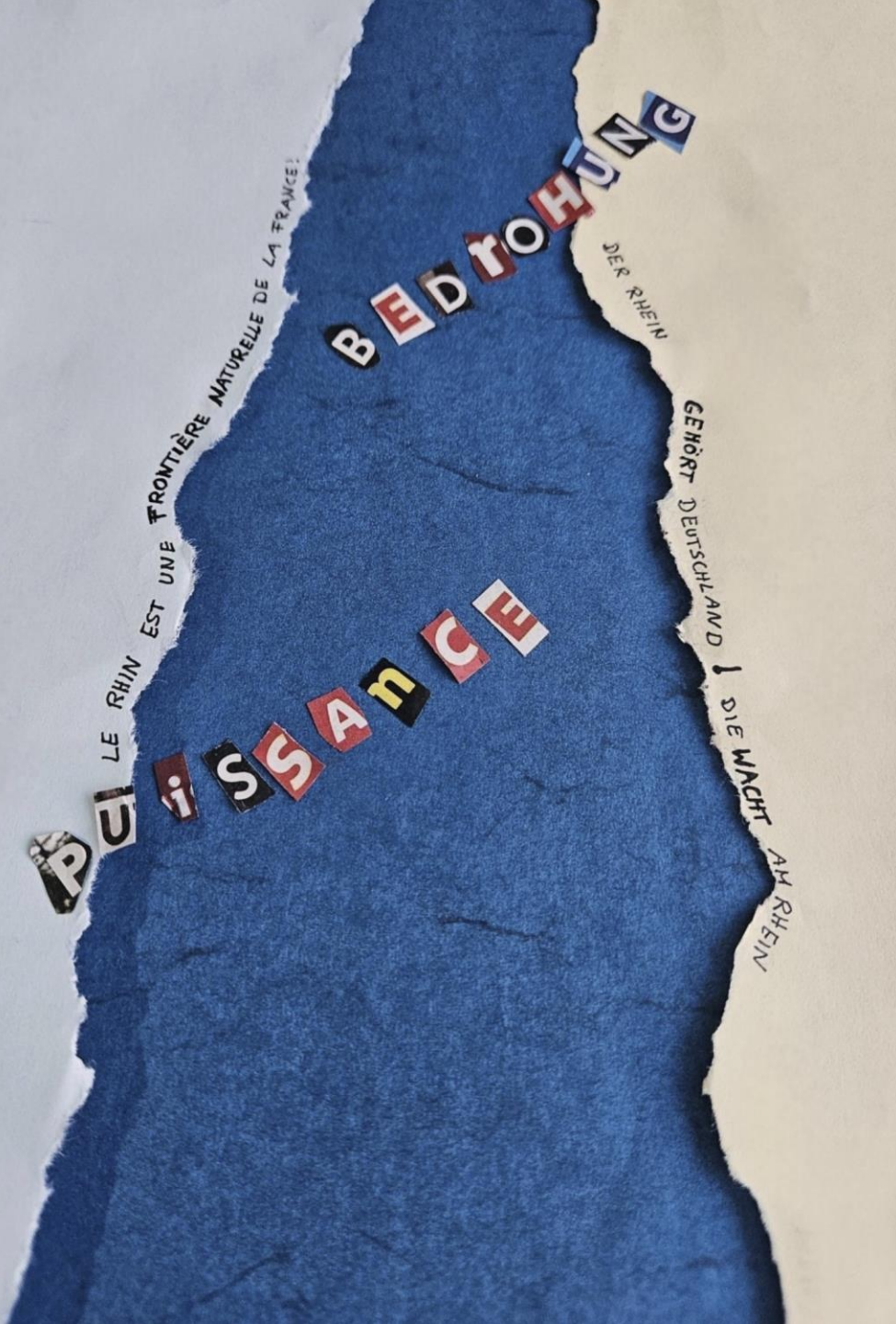
A hand holding a Fujifilm camera, with the lens pointing towards the viewer. The camera is positioned above a body of water, and a horizontal line of small, light-colored stones separates the camera from the water. The background is a dark, textured surface.

Photography is a unique way to express certain messages

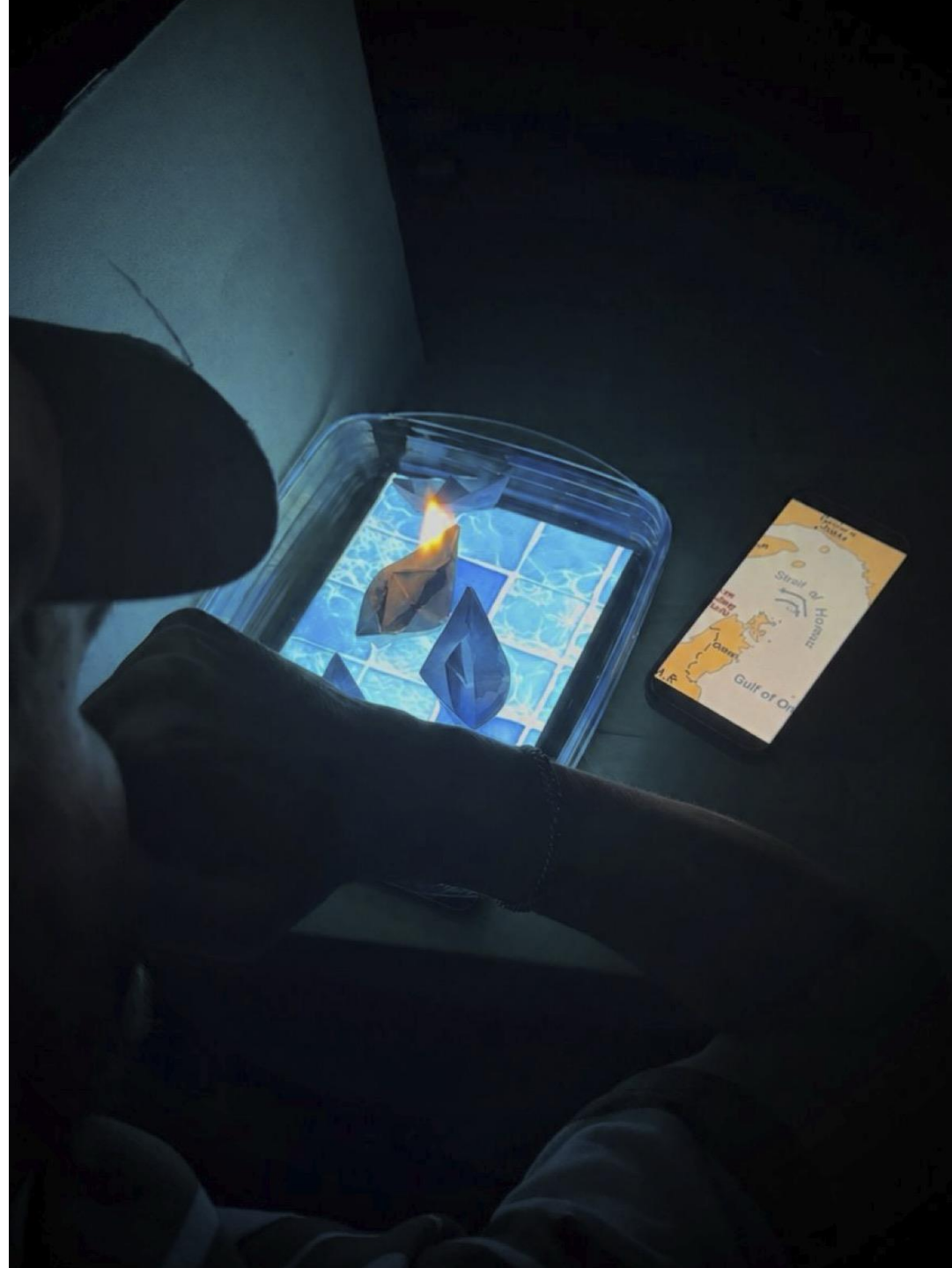
Other **Projects**



**Only The Best For The Best,
Ella & Naila**



**The Rhine
Conflict,
Sylvia &
Sophia**



Battleships, Robin

A close-up photograph of a hand holding a black Fujifilm camera. The camera is the central focus, with the 'FUJIFILM' logo clearly visible on the top. The hand is positioned as if about to take a photo. The background is a dark, textured surface, possibly water or a wet stone, which reflects the camera and the hand. Overlaid on the image is a quote in white text.

“One eye of the photographer looks wide open through the viewfinder, the other, the closed looks into his own soul.”

- Cartier-Bresson

A hand holding a Fujifilm camera lens over water with a stone border. The camera lens is the central focus, with the Fujifilm logo visible. The background is a dark, textured surface, possibly water, with a line of small stones in the foreground. The text 'Traces Of Red' is overlaid on the image, with 'Traces Of' in white and 'Red' in red. Below it, the text 'Thanks for your attention!' is written in white. In the bottom right corner, the text 'Created by Maja, Anna Maria & Leonie' is written in white, with 'Maja', 'Anna Maria', and 'Leonie' in red.

Traces Of Red

Thanks for your attention!

Created by Maja, Anna Maria & Leonie